

1. Title / Content Area:	Mountain Escapes
2. Historic Site:	Grand Lake Lodge
3. Episode:	https://www.pbs.org/video/mountain-escapes-hx3qfc/
4. Developed by:	Laura Israelsen, Denver Public Schools Michelle Pearson, Adams 12 School District
5. Grade Level and Standards:	<p><i>Grade Level:</i> 6th – HS</p> <p><i>Grade Level:</i> 6th - HS</p> <p><i>Standards:</i> Colorado Social Studies Standards 1-4</p> <p><i>Prepared Graduate Competencies:</i></p> <p>Content in this Document Based Question (DBQ) link to Prepared Graduate Competencies in the Colorado Academic Standards</p> <p>6th: PGC 1-5, 7, 8</p> <p>7th: PGC 1-5, 7</p> <p>8th: PGC 1-5, 7</p> <p>HS: PGC 1-5, 7, 8</p>
6. Assessment Question:	How do historic places today show us the importance of leisure time of yesterday?
7. Contextual Paragraph	<p>Mountain escapes were always part of the equation when people were coming to Colorado, but with the availability of rail travel, the advent of the automobile, and the increased ease of access to the Rocky Mountains, Colorado became a destination for not just those that could easily afford it, but also anyone who could get there by foot, carriage, train, or automobile.</p> <p>Railroad spent a good amount of time using tourism as marketing, and Denver developed rapidly around the turn of the century with people being able to access the city on the rail lines. After arriving in Denver, it was then up to the tourist to trek into the mountains for their vacation stay. Residents soon capitalized on this opportunity and lodges, campgrounds, and motor lodges began to emerge.</p> <p>As transportation and access to the great outdoors changed, so did the expectations people had for their visits, and time spent in the mountains became</p>

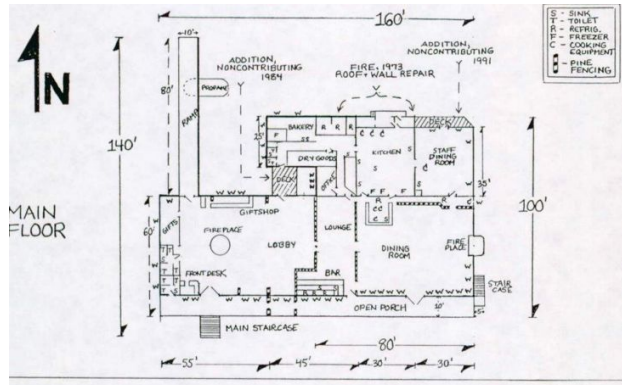


	<p>more commonplace. One key example of this is in Grand Lake where the historic Grand Lake Lodge was established in 1920. Still operating today it continues to provide vacation accommodations for contemporary travelers in cabins and a lodge just as it has done for almost 100 years. The Grade Lake Lodge District was listed in the National Register of Historic Places in 1973 and encompasses over 103 buildings, most of which have distinct rustic architecture that is characterized by wood siding, stone foundations and stone chimneys. This type of architecture was frequently used by the National Park Service and reflected the fact that the lodge was within the boundaries of Rocky Mountain National Park until Congress changed the boundaries to exclude the privately owned lodge.</p> <p>The Smith-Eslick Court Cottage is another example of travel accommodations being built to accommodate the needs of the automobile traveler by having a one room cabin adjacent to the carport covering their car.</p>	
8. Connection to Historic Preservation	<p>With the turn of the century, the use of railroads and the increase in car travel transportation changed how people visited the west. Because of these technological innovations, more and more people have come to Colorado to visit the Rocky Mountains and spend time vacationing. Historic places provide a unique lens into the eras of vacation travel and the History Colorado State Historical Fund, local communities and historic groups have made efforts to both preserve and continue to use many of the beautiful historic resources for tourism even today.</p> <p>Whether it is the historic Grand Lake Lodge, listed in the National Register of Historic Places in 1973, or the Smith-Eslick Cottage Court listed in 2016, both are significant for their contributions to recreational life and the development of tourism in Colorado. Architecturally the lodge is significant being an example of western rustic large architecture and the Smith-Eslick Cottage Court is an excellent rare example of the same in the motor court style.</p>	

Document Based Question (DBQ)

Document Set

Fig 1: Main Lodge Building in the
Grand Lake Historic District



GUIDING QUESTIONS:

1. Look at the layout of the lodge. How do the layout and the amenities included promote tourism?
2. What could be the benefits of staying in a lodge compared to a cabin or a tent?
3. What other considerations did the architect take into consideration when he was designing this lodge for the traveler?

<https://npgallery.nps.gov/NRHP/GetAsset/57afa084-21ae-460d-9e6a-872fe0647fa2>

View of Grand Lake Lodge Interior and Exterior

Exterior:



Interior:




Exterior:

<https://drive.google.com/file/d/1wWvKMxpgd0DCdI-0UnJKcaVip8D66lnh/view?usp=sharing>

GUIDING QUESTIONS:

1. Look closely at the lodge. What natural elements does the architecture entail?
2. Is this lodge made for one person or multiple? How do you know that?
3. How does the layout of the lodge and the materials used to create it blend into the landscape? Why is this important? How does it contribute to the visitor's experience? Why might this material have been used?
4. What kind of details in the interior of the lodge give the visitor a feeling of being outdoors?
5. Based on this image, what kind of features could be original to the lodge?

<p>Interior:</p> <p>https://drive.google.com/file/d/1g9eiMPsXaIZmFegM93wpuVMYY1fR1HB8/view?usp=sharing</p>	
---	--

View of Smith-Eslick Cottage Court	GUIDING QUESTIONS:
	<ol style="list-style-type: none"> 1. Note the layout of the cottage court. How does this layout contribute to the convenience of the traveler? 2. Why would this setup be considered a luxury over tent camping? 3. The accommodations in the cottage court were generally sparse (A bed, table, stove, and chairs) . Why would a stove be needed? 4. What hazard would the stove create?
<p>http://grandlakehistory.org/museums/cottage-camp/</p>	

Side wall of the Smith-Eslick Cottage Court	GUIDING QUESTIONS:
	<ol style="list-style-type: none"> 1. What materials are used to create the Smith-Eslick Cottage Court? Where does the material come from? Why is this material appropriate for such a building where it's located? 2. How is the wood used to provide a decorative element for the eye?



3. Why would this style be called rustic? Describe.

<https://www.nps.gov/nr/feature/places/pdfs/16000491.pdf>

Tourist Lodging in the Colorado State Register of Historic Properties

GUIDING QUESTIONS:

1. Review the document at the link provided. What other locations have architectural similarities to the Grand Lake Historic district and Lodge?

2. What other locations are very different architecturally?

3. What other types of travel lodging and historic properties are in the Colorado State Register or the National Register of Historic Places?

<https://www.historycolorado.org/sites/default/files/media/documents/2019/1633.pdf>

Assessment Question
How do historic places today show us the importance of leisure time of yesterday?
Response